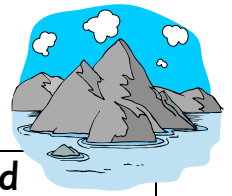


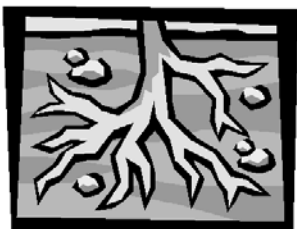


# Rocks and soils

a list to add to

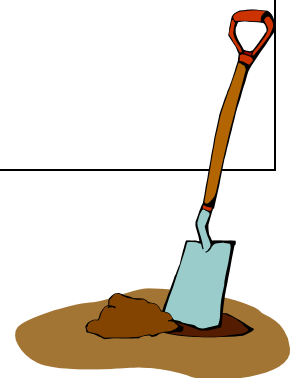


A a	B b	C c	D d
absorb absorbent		chalk change cool clay	cliff crumbly crust
E e	F f	G g	H h
	filter	granite	hard heat humus
I i	J j	K k	L l
igneous impermeable			landscape layers limestone liquid
M m	N n	O o	P p
marble measure melted metamorphic			particle peat pebble permeable
Q q	R r	S s	T t
quarry	rock roots	sand sandstone sedimentary sieve slate	soft soil squashed sticky stone
U u	V v	W w	X x Y y Z z
	volcano volcanic	water	



## Notes:

permeable: allows liquids to flow through  
 impermeable: does not allow liquids to flow through  
 absorb: to take in liquids  
 absorbent: a material that is able to take in liquids  
 humus: decayed plant material



Leanne Gwilliam  
Bellfield Junior School